

# B4063 CYCLE IMPROVEMENT SCHEME

ELMBRIDGE TO BRICKHAMPTON GOLF CLUB



## UPDATE BULLETIN 21.03.2024

To keep you up to date on our progress, we have outlined below the work we have completed to date, our current work areas and what you can expect in the weeks ahead.

### WORK COMPLETED TO DATE

- All works in Phases 1A, 1B, 2A, 2B and 3A complete.
- Planting in Phases 1B and 3A complete
- All traffic signal ducting and connections complete with the exception of Phase 4B south side footpath, with works due to be completed soon.
- Approximately 80% of road markings complete across project



### WORKS IN PROGRESS

- Road planing, surfacing and kerbing ongoing during day and night shifts in Phase 4B
- Day works continue installing kerbing on south side footpath outside Hare & Hounds

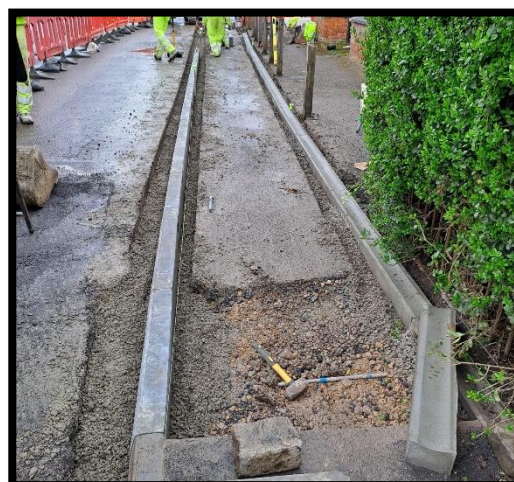


### UPCOMING WORKS

- Upon completion of Cheltenham Road East junction with Parton Road and Innsworth Lane, works will continue in Phase 3B to complete final connection towards Sandycroft Road
- Road markings to be complete
- Final MMA to be sprayed in Phase 4B

### KEY TO AREAS

- 1A North Community Fire Station to Pirton Fields
- 1B Area opposite Tesco
- 2A St Mary's Primary to GL3 Hub
- 2B Westover Court to Brickhampton Golf Course
- 3A Goldsmith Road junction to Heathdean Road
- 3B Westover Court to Sandycroft Road
- 4A Wills Bros compound to Fire Station
- 4B Parton Road Junction



If you have any questions or queries please email [B4063@knightsbrown.co.uk](mailto:B4063@knightsbrown.co.uk) or call 07818 432182

